



Product Technical data sheet: Supplier Declaration

Product identification

Adeo Ref	829604;829611;829608;829598;829607;829597;829610		
Product EAN	3276007138597;3276007138603;3276007138610;3276007138627;3276007138634;3276007138641;3276007138658		
Supplier ref	367-00147;367-00148;367-00149;367-00150;367-00151;367-00152;367-00153		

Template version history

Version	Status	Date Status	Comments
V.0	Under construction	20/08/2018	Template construction
V.1	Validated construction	30/09/2019	Validated Template

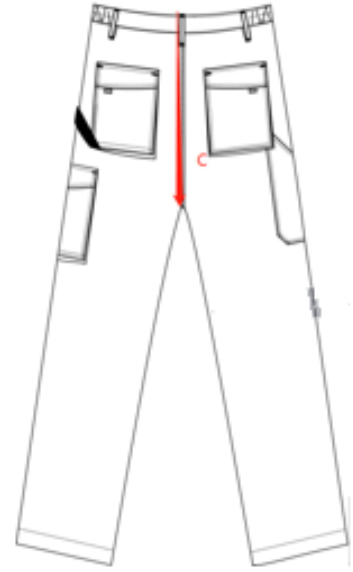
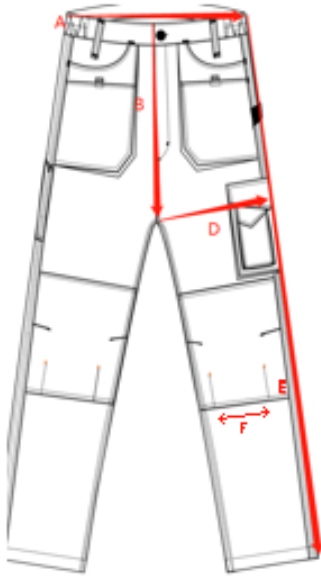
Object

Technical data sheet of products

Technical data

Tech-Tool Sourcing Company Limited
FL.5 Wenshi Building, No.1998 South Yanggao Road, Pudong New District, Shanghai, China

KINGLONG PROTECTIVE PRODUCTS CO.,LTD
Light Industrial Park,Dingjiaying Town,Danjiangkou City,Hubei Province



Dexter Trousers size chart(CM) (tolerance:+/-2 CM)								Material & Description
Code	Name	S	M	L	XL	XXL	XXXL	60% cotton 40% polyester 270 g/m m ² ±5% canvas 6 pockets on the front 2 ribbons on front pocket 2 knee pad pockets on the front 1 ribbon on the left side pocket 3 pockets on the back 2 ribbons on back pocket s crotch with good quality zipper and 2cm button Dexter rubber label on the front 1PC/pp polybag with one color paper card with plastic hanger with hook
A	1/2 width of waist	43	45	47	50	53	56	
B	Frontrise	27	27.5	28	28.5	29	29.5	
C	backrise	40.5	41	41.5	42	42.5	43	
D	thigh	31.5	32.5	33.5	34.5	35.5	36.5	
E	Length of outseam	107	108.5	110	111.5	113	114.5	
F	Opening for knee pads	15 < F < 16.2						
NW	without packages(kg+/-5%)	0.59	0.6	0.62	0.65	0.67	0.7	

Remark: The main technical features could be adjusted by supplier based on different kinds of products.

Logistic data:

Atlas code	Description	Sales Unit Product(+/-5%)				Master Carton(+/-5%)			
		L(cm)	W(cm)	D(cm)	GW(kgs)	L(cm)	W(cm)	D(cm)	GW(kgs)
829597	DEXTER TROUSERS XXL	49.5	30.5	2.5	0.74	43	31	19	8
829598	DEXTER TROUSERS L	49.5	30.5	2.5	0.7	43	31	19	7.6
829604	DEXTER TROUSERS XS	49.5	30.5	2.5	0.64	43	31	19	7
829607	DEXTER TROUSERS XL	49.5	30.5	2.5	0.72	43	31	19	7.9
829608	DEXTER TROUSERS M	49.5	30.5	2.5	0.67	43	31	19	7.4
829610	DEXTER TROUSERS XXXL	49.5	30.5	2.5	0.76	43	31	19	8.3
829611	DEXTER TROUSERS S	49.5	30.5	2.5	0.66	43	31	19	7.2

Photo

